

LPA56B AutoGen programming

Parts Required

- Install the latest AutoGen program
- LPA56B must be powered and have a serial or USB to serial connection to the computer
- A serial communication cable (OES part #: AU008A)
- USB to serial convertor (AU003A)
- Firmware version to be installed, example "LPA56Be_29Apr09.S"

Released versions

1. **Released:** February 24, 2022

Firmware: **LPA56Bf_17Jun13** Software: **WireScan.NET v2.2.7.2**
Framework: .NET 2.0 (SP2) Windows: XP, W7, W8, W10
Updates:
- Changed installer for Windows 10.

2. **Released:** April 7, 2016

Firmware: **LPA56Bf_17Jun13** Software: **WireScan.NET v2.2.6.4**
Framework: .NET 2.0 (SP2) Windows: XP, W7, W8
Updates:
- Added ability to change the default tolerances and save, see manual Appendix for instructions.

3. **Released:** June 17, 2013

Firmware: **LPA56Bf_17Jun13** Software: **WireScan.NET v2.2B**
Framework: .NET 2.0 (SP2) Windows: XP, W7, W8
Updates:
- Added conductor area algorithm to improve multiple cut strand detection.

4. **Released:** June 17, 2013

Firmware: **LPA56Bf_17Jun13** Software: **WireScan.NET v2.1f**
Framework: .NET 2.0 (SP2) Windows: XP, W7, W8
Updates:
- Improved Double wire capability.

5. **Released:** October 1, 2012

Firmware: **LPA56Be_01Oct12** Software: **WireScan.NET v2.1k**
Framework: .NET 2.0 (SP2) Windows: XP, W7, W8
Updates:
- Added Ready Output
- Added security to adding/deleting devices
- Added preconfigured I/O settings for Megomat 3300ED/U and ShinMaywa TRD401.

6. **Released:** April 29, 2009

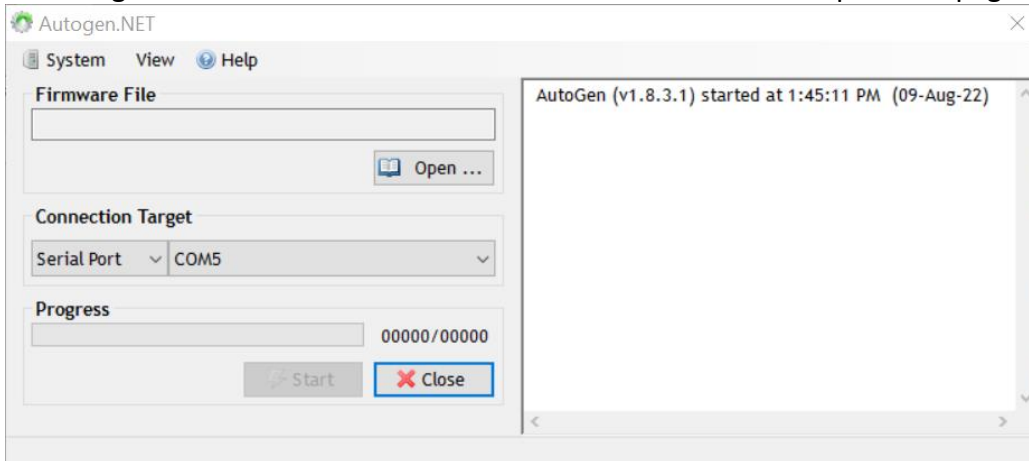
Firmware: **LPA56Be_29Apr09** Software: **WireScan.NET v2.1d**
Framework: .NET 2.0 (SP2) Windows: XP, W7, W8
Updates:
- Added Partial Strip mode
- Added mirror/invert image in the pop-up window.

Instructions

1. Install AutoGen.NET on your computer. Then select the AutoGen.NET Programmer ICON on your desktop.



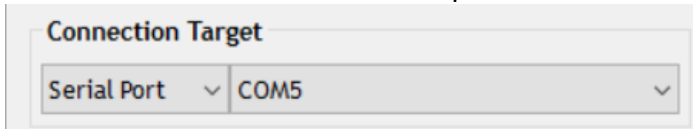
2. The AutoGen software will open, and you will need to select the correct firmware matching the correct WireScan version. See release versions on previous page.



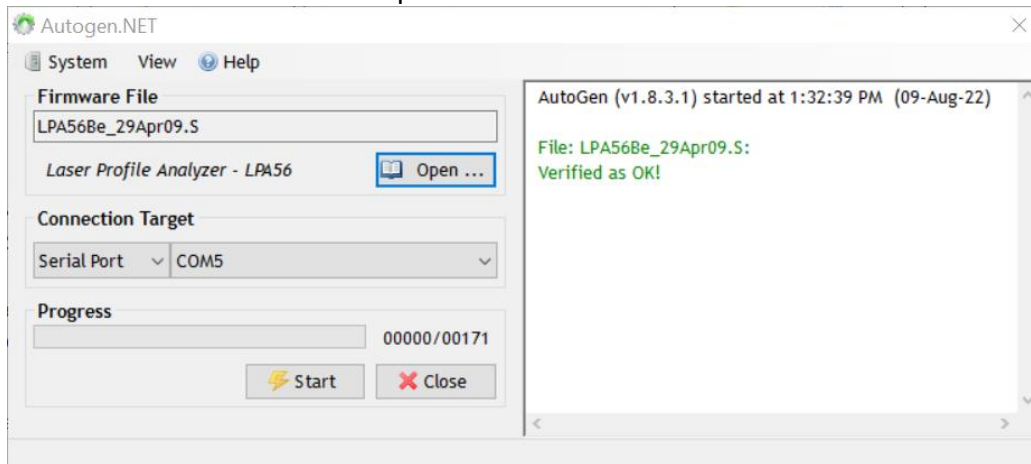
3. Use the latest version of the AutoGen programmer.



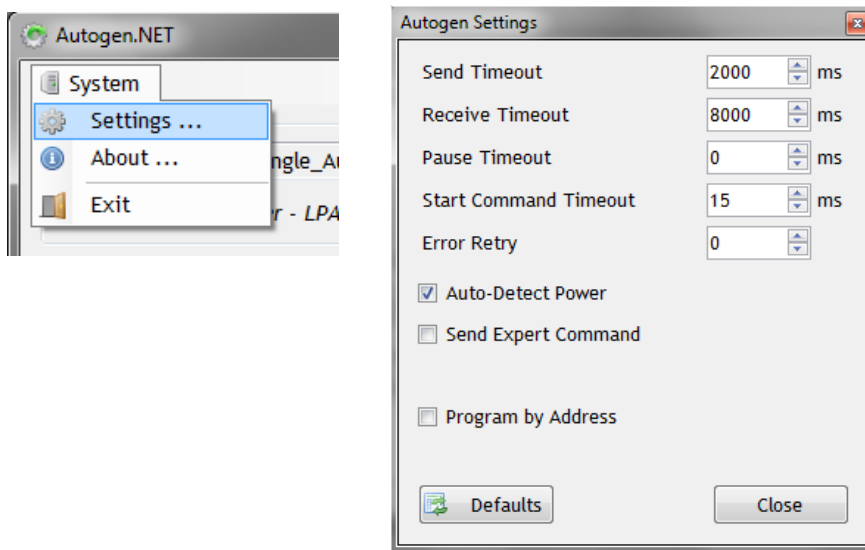
4. Select the correct communication port. This can be USB or Serial Port connection.



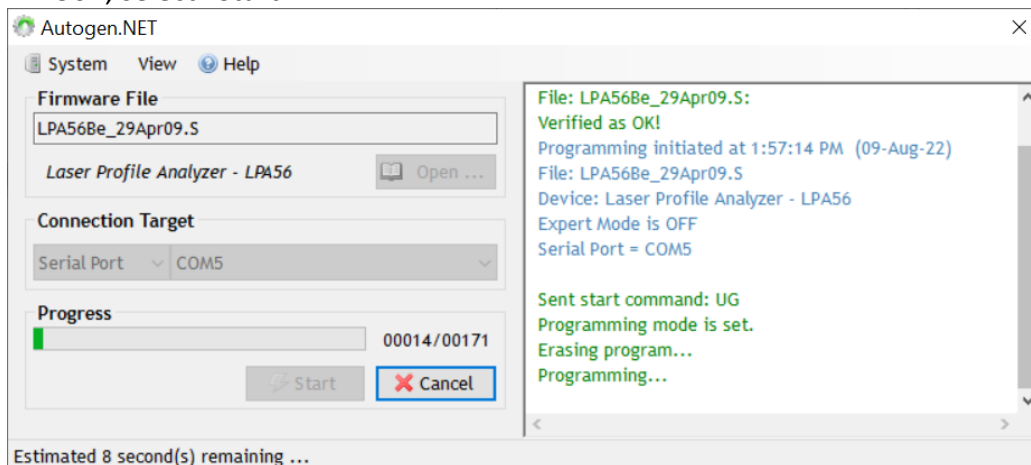
5. Select the latest firmware file provided



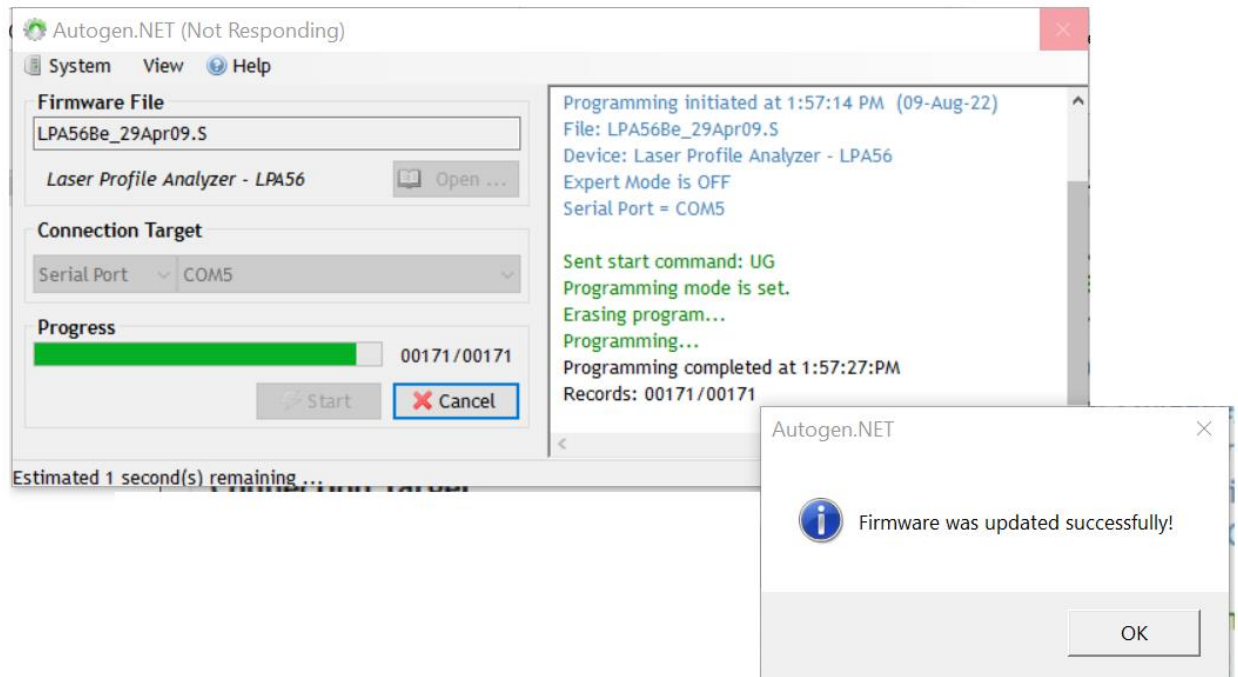
6. Make sure the settings are correct.



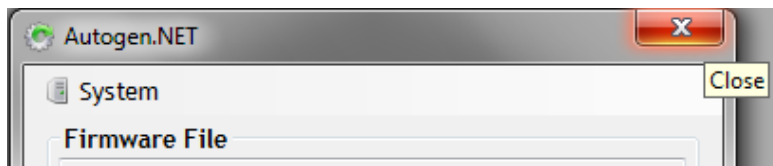
7. When you are confident you have selected the correct firmware and settings for your LPA56B, select "Start"



8. When AutoGen finishes select OK.



9. Close the AutoGen programmer.



10. Connect your LPA56B to the correct version of WireScan.

