



# ForceView™

Process Monitoring Solutions



## Crimp Force Monitor Models:

CFM1000, CFM2100, CFM2103, CFM2203, CFM21S3, CFM22S3,  
CFM4100, CFM4200, CFM4103 and CFM4203

## AutoGen Instruction



FM 64157

## Table of Contents

<b>AUTOGEN SOFTWARE AND PROGRAMMING</b>	<b>3</b>
<b>RESETTING GLOBAL DEFAULTS ON THE CFM1000</b>	<b>7</b>
<b>RESETTING GLOBAL DEFAULTS ON THE CFM2100</b>	<b>8</b>
<b>RESETTING GLOBAL DEFAULTS ON THE CFM4100 AND CFM4200</b>	<b>9</b>
<b>RESETTING GLOBAL DEFAULTS ON THE CFM2103, CFM2203, CFM21S3, CFM22S3</b>	<b>10</b>
<b>RESETTING GLOBAL DEFAULTS ON THE CFM4103 AND CFM4203</b>	<b>11</b>

## AutoGen Software and programming

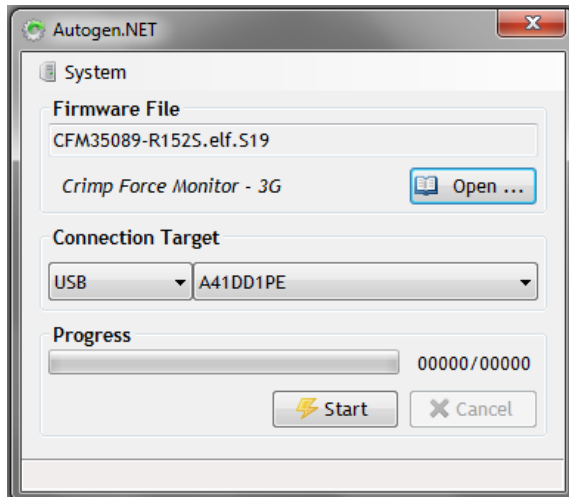
AutoGen software is designed to update OES Technologies products. This manual is specific to OES Technologies Crimp Monitor models listed below.

<b>MODEL</b>	<b>IO INTERFACE</b>	<b>Firmware + Software</b>	<b>OPTIONS</b>
CFM1000	1 input, 2 outputs	5.1.1 + FV2.3.0.0	No configuration, only on log files
CFM2100	3 inputs, 4 outputs	1.5.2W8 + FV2.3.0.0	Everything from software.
CFM4100	2 inputs, 4 outputs	1.5.2W8 + FV2.3.0.0	Learn Auth, stop after learn, process deviation.
CFM4200	6 inputs, 8 outputs	1.5.2W8 + FV2.3.0.0	Learn Auth, stop after learn, process deviation.
CFM2103V1	3 inputs, 4 outputs	2.4.9 + FV3.2.5.5	Everything from software.
CFM2103	2 inputs, 3 outputs	2.4.9 + FV3.2.5.5	Everything from software.
CFM2203	4 inputs, 6 outputs	2.4.9 + FV3.2.5.5	Everything from software.
CFM21S3	2 inputs, 3 outputs	2.4.9 + FV3.2.5.5	Everything from software.
CFM22S3	4 inputs, 6 outputs	2.4.9 + FV3.2.5.5	Everything from software.
CFM4103	2 inputs, 4 outputs	2.4.9 + FV3.2.5.5	Learn Auth, stop after learn, process deviation.
CFM4203	6 inputs, 8 outputs	2.4.9 + FV3.2.5.5	Learn Auth, stop after learn, process deviation.

1. Install AutoGen.NET on your computer. Then select the AutoGen.NET Programmer ICON on your desktop.



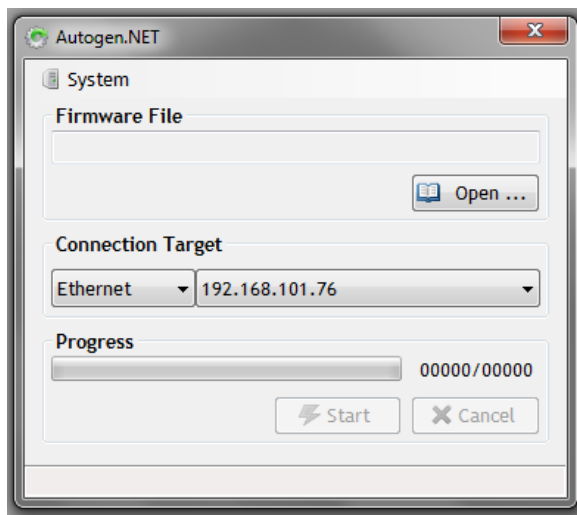
2. The AutoGen software will open and you will need to select the correct firmware for the correct products and matching the correct ForceView version. (\*\*see table on page 3)



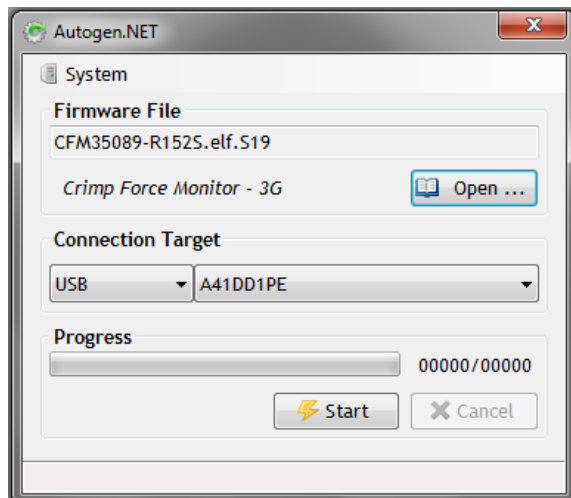
3. Use the latest version of the AutoGen programmer.



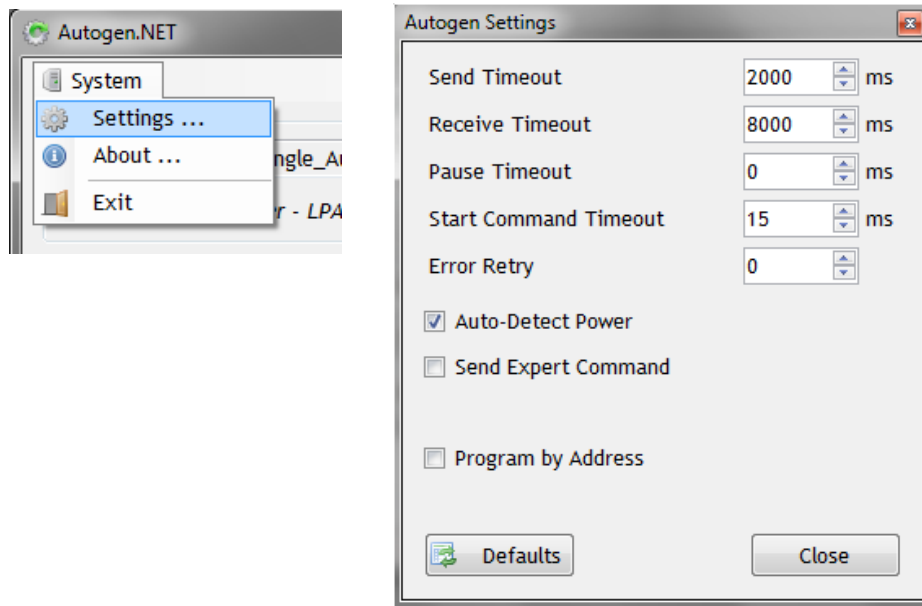
4. Select the correct communication port. This can be USB or Ethernet connection depending on model.



5. Select the latest firmware file provided.



6. Make sure the settings are correct.



\*\*\* For all OES Crimp Monitor models, the settings above are correct if you are updating to a new revision with updates of the current firmware version.

The only item to change would be “Send Expert Command”. This is required when changing the Crimp Monitor to different models or greater than three update levels. With this mode not checked, you are just reprogramming the user program.

If changing to a different model as example 2100 to 2103 or you are changing more than three update levels of the firmware newer or older as example 1.3.0 to 1.5.2, then you must select “Send Expert Command” and then you will be programming the complete memory of the unit.

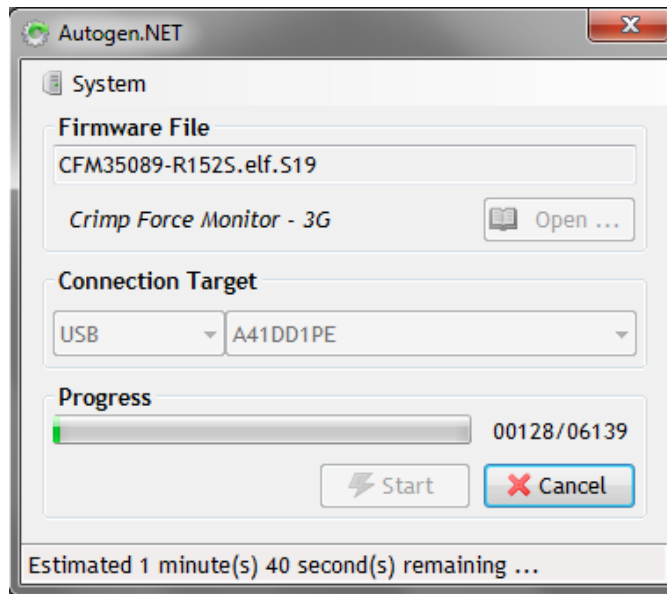


**Note:** When programming with “Send Expert Command” the unit cannot recover from power loss or incomplete programming and must come back to OES or a representative to have the unit reprogrammed.

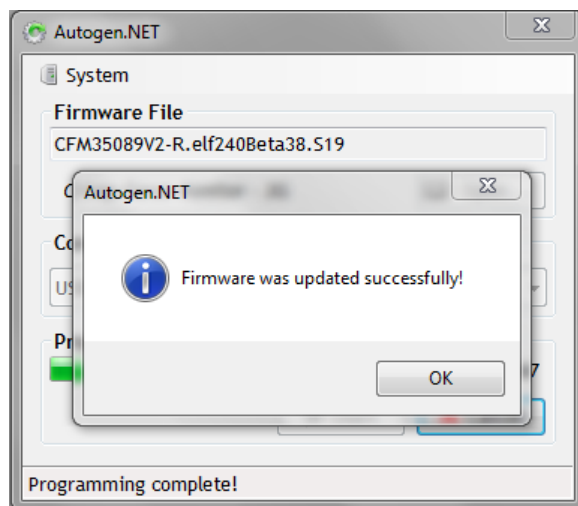
When programming normally without “Send Expert Command” the unit can recover from an interruption of power or incomplete programming.

All OES Crimp Monitors have an “AutoGen Start-up mode”; when the unit is first powered on, it will go into AutoGen mode for the first five seconds and then run the regular program. To use this mode simply connect the communication cable to the Crimp Monitor, open AutoGen, load the correct firmware, power on the Crimp Monitor and then select start programming in the first five seconds. The unit should connect and complete the loading of the program.

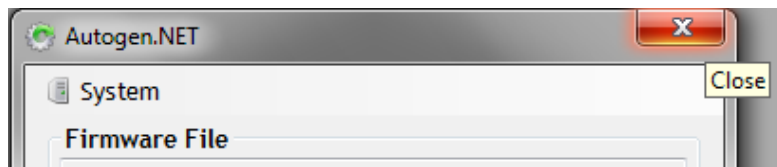
7. When you are confident you have selected the correct firmware and settings for your Crimp Monitor, select “Start”



8. When AutoGen finishes select OK.

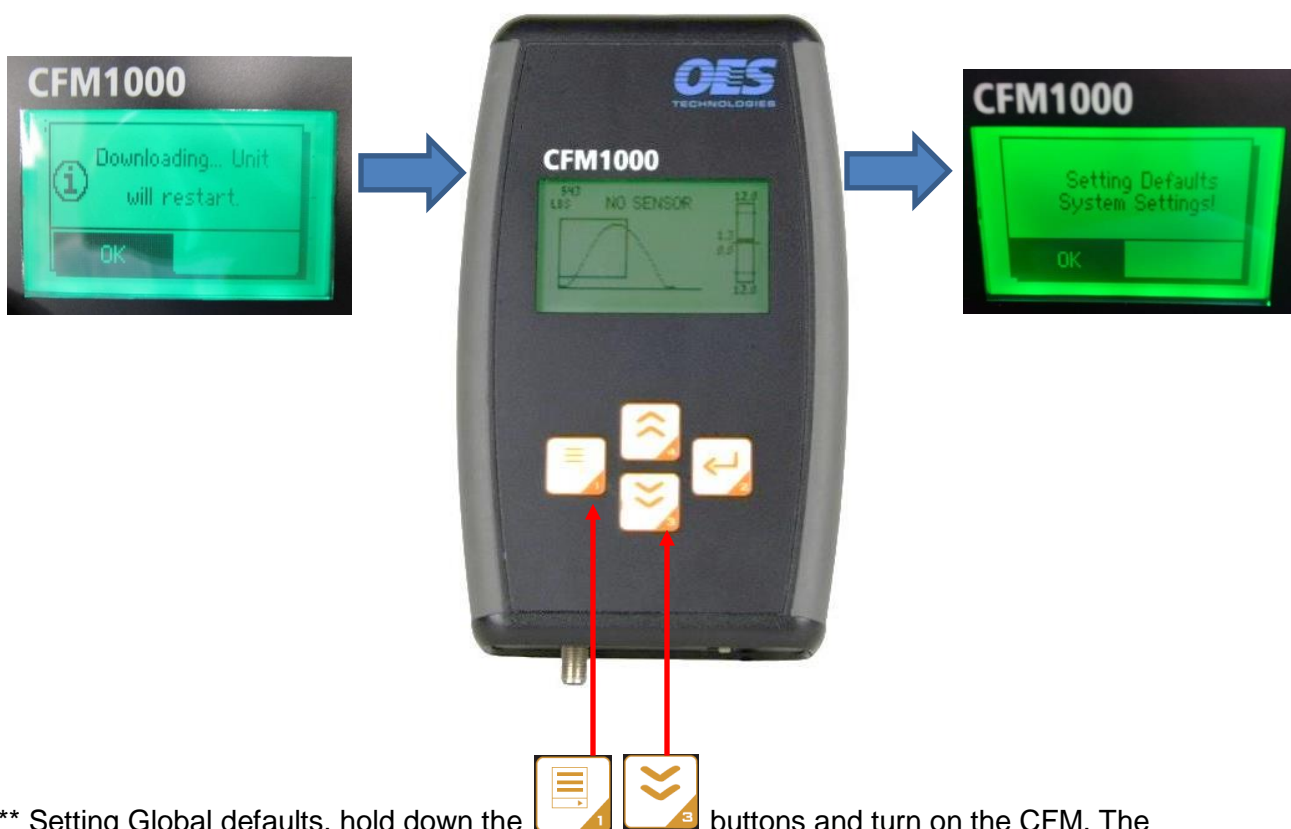




9. Close the AutoGen programmer and then connect your Crimp Monitor to the correct version of ForceView.



10. To complete the update you must then reset global defaults of the unit to make sure the firmware and all memory locations are set correctly. Please see the reset methods for the different models of Crimp Monitors.

## Resetting Global Defaults on the CFM1000



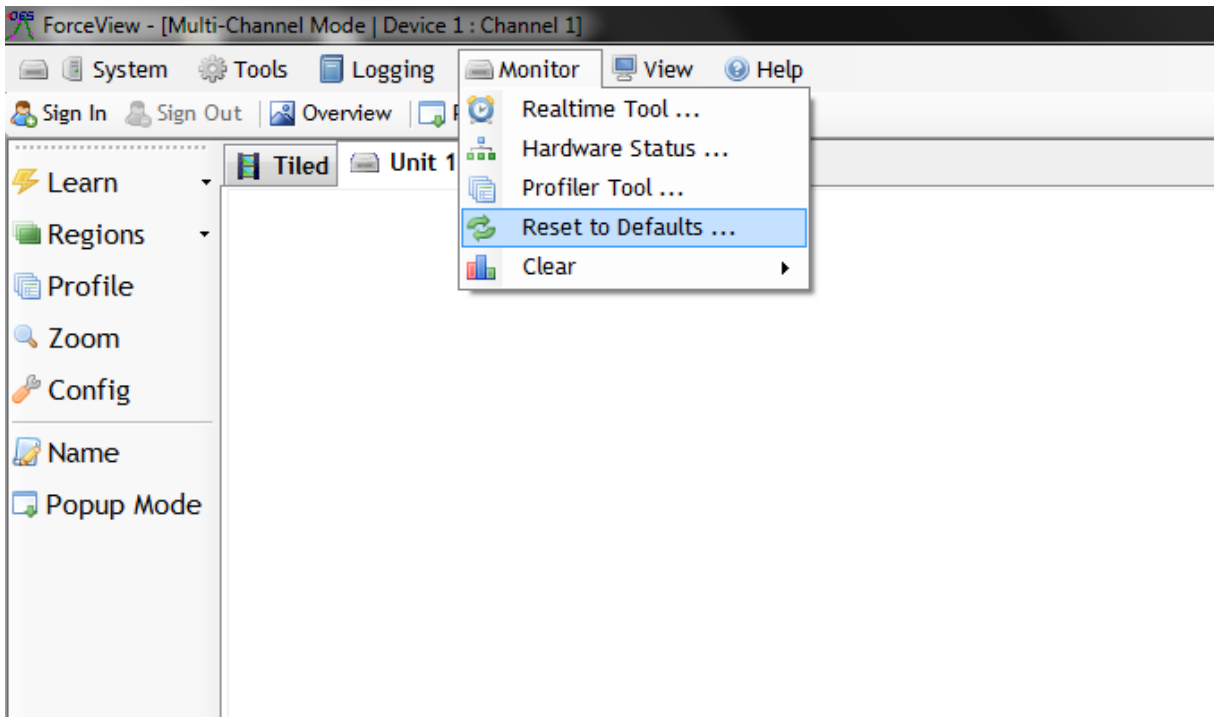
\*\* Setting Global defaults, hold down the   buttons and turn on the CFM. The screen will come up and notify you it is setting global defaults release the buttons and the unit is ready to run.



**Note:** the CFM1000 is designed to communicate with ForceView 2.3.0 and is not compatible with other versions of ForceView including ForceView3.

## Resetting Global Defaults on the CFM2100

Go to the pull down menu and select “Reset to Defaults”



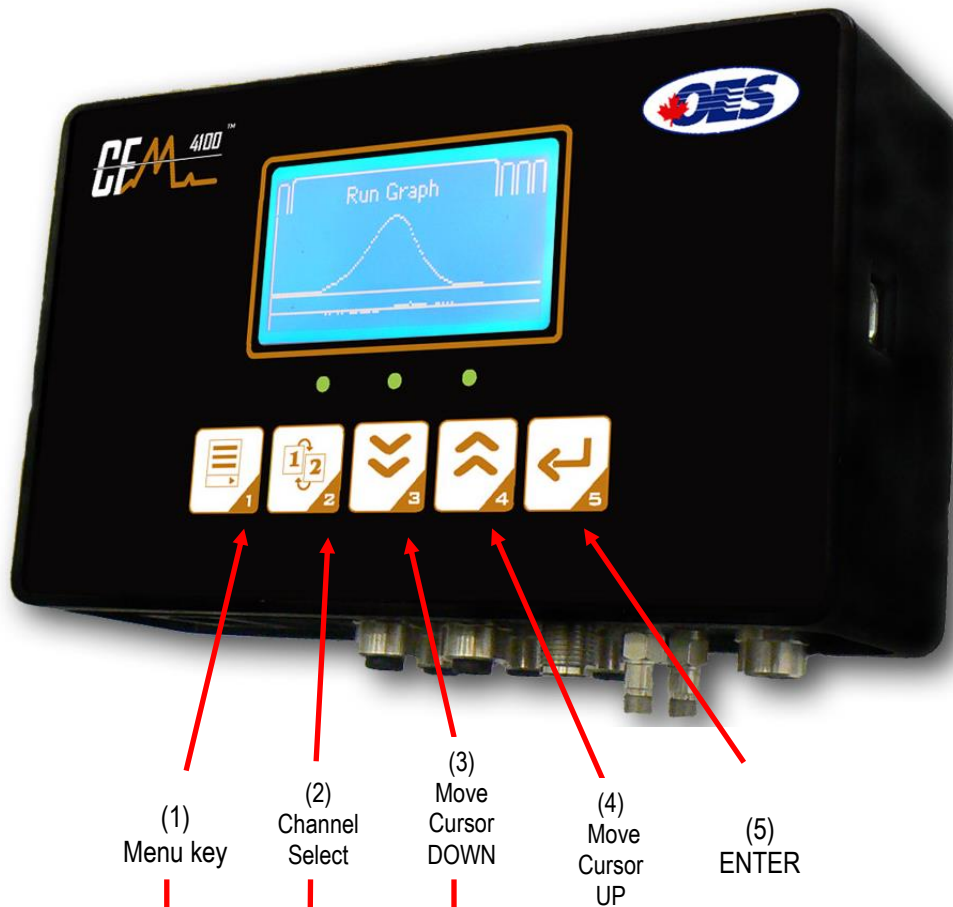
After resetting defaults, power off the CFM2100 and then back on, this will confirm the resetting of the defaults.



*Note: the CFM2100 is designed to communicate with ForceView 2.3.0 and is not compatible with other versions of ForceView including ForceView3.*



## Resetting Global Defaults on the CFM4100 and CFM4200



Hold the (1) Menu, (2) Channel Select, and (3) Down keys while you power on the unit. When the unit powers on continue holding until the "Setting Global Defaults" screen comes up.

Release the buttons when the following screen appears

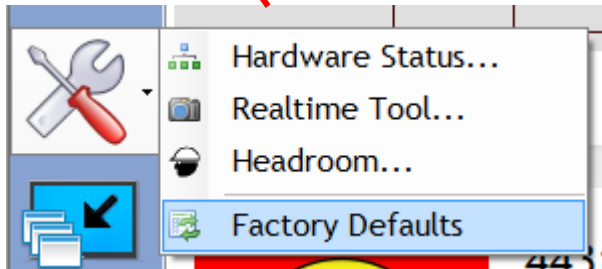
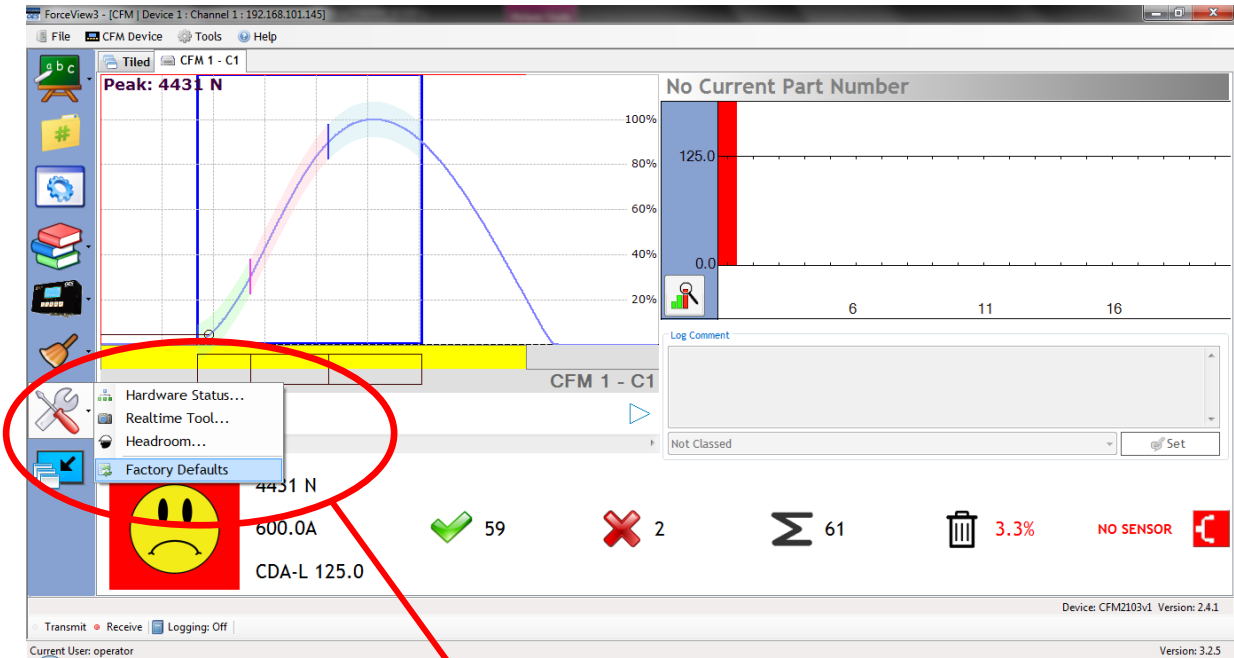
Setting global defaults...

The firmware download is now complete.



**Note:** the CFM4100 and CFM4200 are designed to communicate with ForceView 2.3.0 and is not compatible with other versions of ForceView including ForceView3.

## Resetting Global Defaults on the CFM2103, CFM2203, CFM21S3, CFM22S3



**Note:** the CFM2103, CFM2203, CFM21S3, CFM22S3 are designed to communicate with ForceView 3.2.5.7 and is not compatible with other versions of ForceView.

## Resetting Global Defaults on the CFM4103 and CFM4203



Hold the (1) Menu, (2) Channel Select, and (3) Down keys while you power on the unit. When the unit powers on continue holding until the "Setting Global Defaults" screen comes up.

Release the buttons when the following screen appears

A blue rectangular screen with the text "Setting global defaults..." in white.

Setting global defaults...

The firmware download is now complete.



**Note:** the CFM4103 and CFM4203 are designed to communicate with ForceView 3.2.5.7 and is not compatible with other versions of ForceView.



*Note: If using the AutoGen programming option inside the ForceView software please see each individual Crimp Monitor Model manual. If you have any questions or concerns please contact OES Technologies as below.*



**ForceView™**  
Process Monitoring Solutions

4056 Blakie Road London, Ontario, Canada  
N6L 1P7  
519-652-5833  
FAX: 519- 652-3795  
[www.OESTechnologies.com](http://www.OESTechnologies.com)



FM 64157